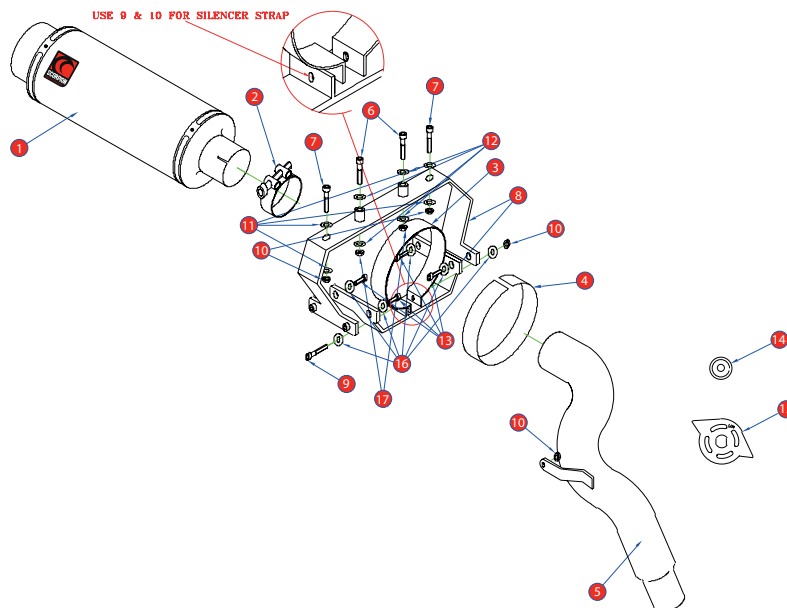


BIKE	KAWASAKI ZX 636/ZX6RR	PART NO.	KA - 77
YEAR	2007 - 2008	FIT KITS	OVAL Z039.11295
NOTES	Use standard fittings where not supplied Remove standard gasket if fitted.	DB-Killer	SCEXDBK08 - (Type H)



- | | |
|--|---|
| 1 250mm Silencer SC 113 | 11 4 x M6 x 17mm Washers (Z017.12722) |
| 2 51-55mm Band Clamp (Z016.10002) | 12 4 x M5 Washers (Z017.12743) |
| 3 Silencer Strap (Z007.20942-1) | 13 4 x M6 x 16mm Button Head Bolts (Z017.10608) |
| 4 Protective Rubber Strap (Z029.10022) | 14 Aluminium Collar (Z026.20045) |
| 5 Connecting Pipe CP 427 | 15 Replacement Servo Wheel (Z007.10955) |
| 6 2 x M5 x 40mm Button Head Bolts (Z017.12742) | 16 4 x M6 Split Washers (Z017.10027) |
| 7 2 x M6 x 25mm Button Head Bolts (Z017.10018) | 17 2 x M5 Nyloc Nuts (Z017.12716) |
| 8 Mounting Bracket Set (Z015.20942) | 18 A4 Heatshield Material (Z028.10102) |
| 9 M6 x 16mm Cap Head Bolts (Z017.10609) | 19 Photo Fitting Instructions |
| 10 3 x M6 Nyloc Nuts (Z017.10033) | |

E-MARK OVAL	SC-113 [e4] 2291 [9]
ISSUE NO.	06
DATE	17/10/2018
AUTHORISED	J.Harkin
CHECKED	

NOTE: ENSURE SCORPION SYSTEM IS CLEAR OF MOVING PARTS AND ALL ORIGINAL FUNCTIONS WORK CORRECTLY.

A



B



A) Remove side panels from both sides of bike.

B) Remove seat.

C) Remove seat cowl

D) Remove seat unit

C



D



BIKE	KAWASAKI ZX 636/ZX6RR	PART NO.	KA - 77
YEAR	2007 - 2008	FIT KITS	OVAL Z039.11295
NOTES		FEATURES	

CONTINUED FROM OVERLEAF:

E



F



E) Disconnect the 4 electrical connectors.

F) Remove lower seat fairing

G) Disconnect the EVC wheel, undo the nut and remove * the cables. We recommend the remove of the cables.

* When removing and refitting the EVC wheel it is very important that the spindle dose not move.

H) Refit Scorpion supplied servo wheel, ensuring 'UP' is visable and the wheel is on the correct way.

I) slacken bolts on the O.E link pipe clamp.

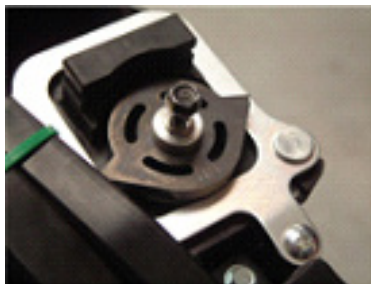
J) Slacken these 2 bolts 1 on either side of the bike.

K) Remove the 2 bolts slackend in the previous step and take away the exhaust unit, take care not to damage any of the lights that are attached.

G



H



I



J



L) Remove the indicator assembly, repeat this on other side of bike.

K



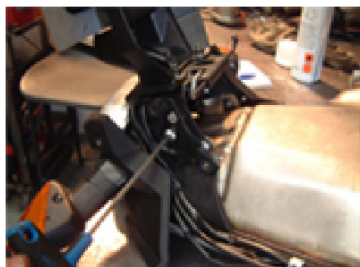
L



BIKE	KAWASAKI ZX 636/ZX6RR	PART NO.	KA - 77
YEAR	2007 - 2008	FIT KITS	OVAL Z039.11295
NOTES		FEATURES	

CONTINUED FROM OVERLEAF:

M



N



M) Un-bolt this inner bracket, repeat this on opposite side of bike.

N) This plate is not required when fitting the Scorpion silencer, we recommend that you save it for future reference. Also we suggest that you replace the 2 plastic rivets in the holes for cosmetic reasons.

O) Un-bolt and remove the number plate and rear light assembly.

O



P



P) Undo these 4 bolts to free the exhaust unit.

Q) Whilst everything is removed from the bike affix the Scorpion supplied heat shielding. This will need cutting to suit from the supplied sheet.

R) Re-fit all the O.E parts on to the Scorpion bracket ensuring that the bracket is the correct way. (as shown in picture) using original nuts and bolts.

Q



R



S) Re-fit lower seat fairing, using the supplied 2 x M6x25mm screws and washers in the 2 furthest back holes.

T) Position light unit under seat and loosely hold in with 2 screws and nyloc nuts.

S



T

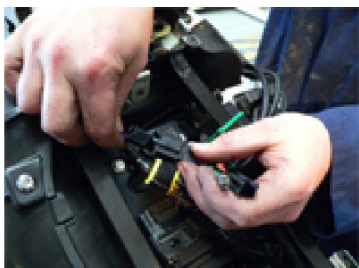


Box: PLOCK 2

BIKE	KAWASAKI ZX 636/ZX6RR	PART NO.	KA - 77
YEAR	2007 - 2008	FIT KITS	OVAL Z039.11295
NOTES		FEATURES	

CONTINUED FROM OVERLEAF:

U



V



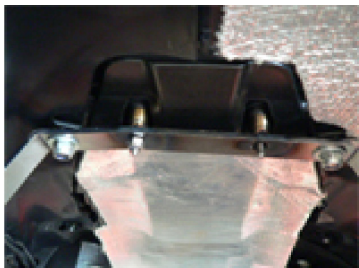
U) Reconnect the 4 connectors that were disconnected earlier

V) Replace upper seat unit using supplied M5x40mm screws and washers.

W) Now upper seat unit is positioned, tighten up all 4 nuts.

X) You are now ready to fit Scorpion Exhaust. First you need to remove the gasket from the O.E pipework, this is not needed. With the gasket removed the link pipe will push into the O.E pipework. You must ensure that the link pipe is pushed in as far as it will go. don't tighten up the clamp just yet.

W



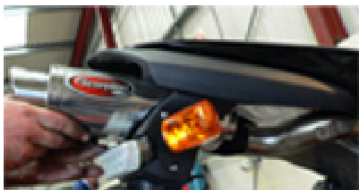
X



Y) Insert the silencer from the back of the bike and push it on to the end of the link pipe. Don't tighten up the clamp yet!

Z) Fit silencer strap on to the silencer from inlet end. Slide up to the bracket, line up the hole with the hole on the bracket and bolt it up. Now everything is together ensure that both clamps are tight.

Y



Z



Now that your Scorpion Exhaust is fitted you can re-fit all your side panels and seat.

With everything back together ensure that all bolts are tight and the Exhaust is fitted correctly and does not foul any of the O.E components.

Take your bike on a short test ride to make sure everything is correct, when back allow time for exhaust to cool and recheck all nuts and bolts to ensure they are still tight.