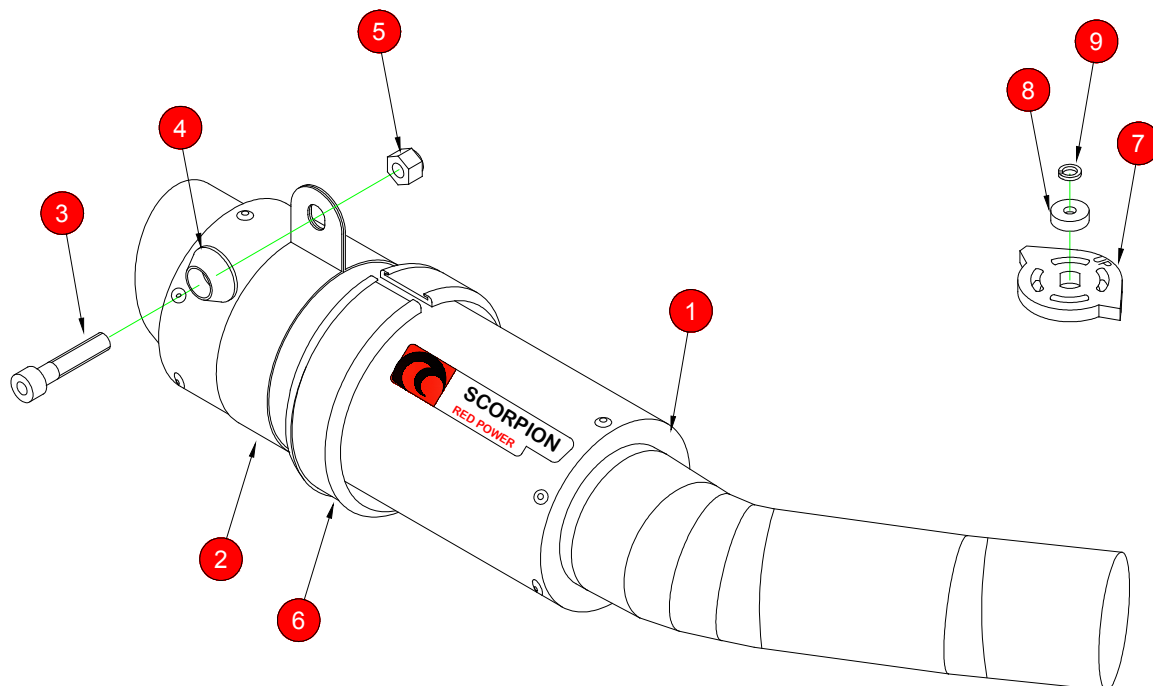


BIKE	KAWASAKI ZX-6R 636	PART NO.	KA-1003
YEAR	2013- On	FIT KITS	Z039.10478
NOTES	Use standard fittings where not supplied <b>Remove standard gasket if fitted.</b>	DB-Killer	SCEXDBK28 - (Type EE)



1 225mm RP1-GP Silencer (SC160) with integrated Connecting Pipe (CP583)

2 Titanium Silencer Strap (Z028.10013)

3 M8 x 40mm Cap Head Bolt (Z017.10076)

4 Alloy Bolt Finisher (Z026.20068)

5 M8 Nyloc Nut (Z017.10062)

6 Square Edge Rubber (Z029.10024)

7 Servo Wheel (Z007.10955)

8 Aluminium Collar (Z026.20045)

9 M6 Split Washer (Z017.10027)

E-MARK	BSAU 193a 1990/t3
ISSUE NO.	04
DATE	17/10/2018
AUTHORISED	J.Harkin
CHECKED	

FITTING INSTRUCTION OVERLEAF



Box: PLOCK 1

BIKE	KAWASAKI ZX-6R 636	PART NO.	KA-1003
YEAR	2013 - On	FIT KITS	Z039.20478
NOTES	Use standard fittings where not supplied <b>Remove standard gasket if fitted.</b>	FEATURES	

CONTINUED FROM OVERLEAF:

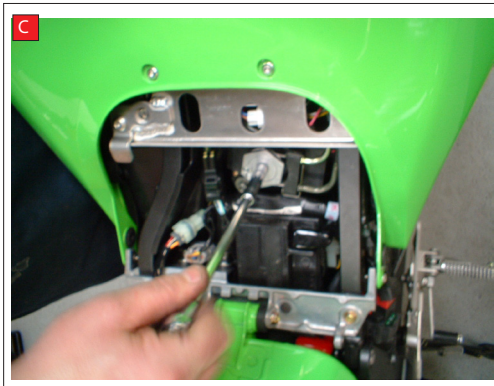


A) Remove both side plastics (2 off) by removing front screw then remove panels from clips and velcro.

B) Once done you can now access the two screws that hold the seat in place, one screw each side of seat, then slide off.

C) To disconnect cables at the seat end, you have to remove the hexagonal wheel, without turning it's shaft.

Remove bolt in centre of hexagonal wheel. Support wheel if tight.



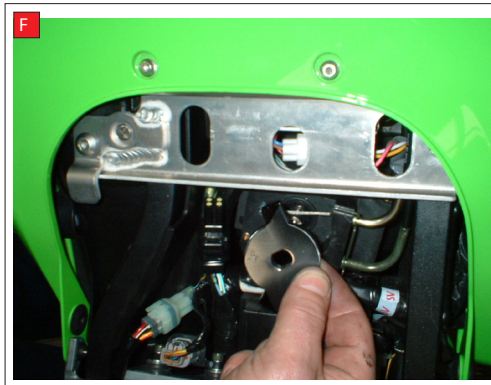
D) Remove hexagonal wheel from shaft, retaining OE bolt.

**DO NOT TURN SHAFT.**

Remove spring clip retaining cable and completely remove the cables.

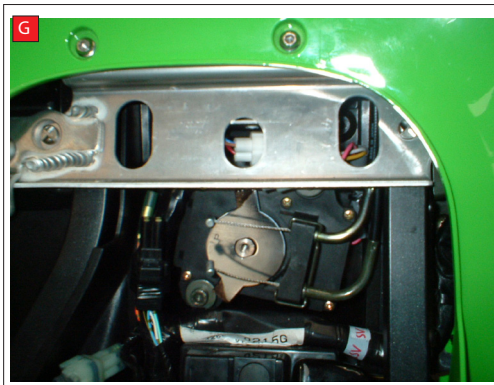
E) The replacement wheel comes with a aluminium collar that is secured in place with OE bolt and split washer.

**DO NOT OVER TIGHTEN.**



F) The replacement wheel must be fitted with the etched letters "UP"

G) The replacement wheel will only fit **ONE WAY** with letters "UP". In case of difficulty please contact us.



With servo wheel fitted, the loose cables will be removed with rest of exhaust system.