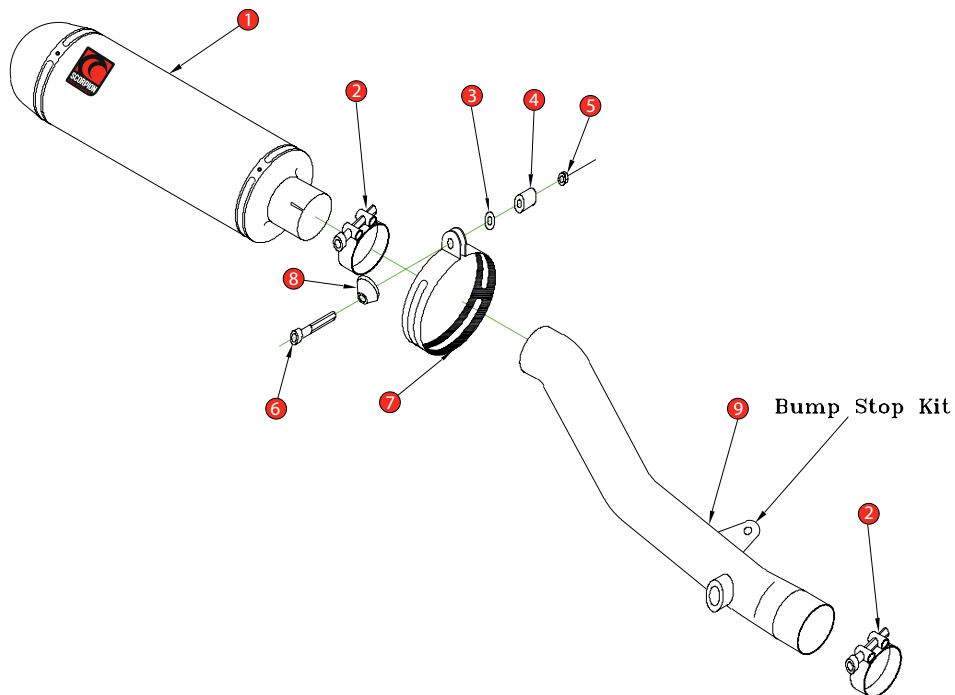


Box: PLOCK 1

BIKE	HONDA CBR 600 Fi-F4i	PART NO.	EHA - 91
YEAR	2001 - ON	FIT KITS	OVAL Z039.11039
NOTES	Use standard fittings where not supplied Remove standard gasket if fitted.	DB-Killer	SCEXDBK12 - (Type B)



1 225mm Silencer ESC 114	8 Aluminium Bolt Finisher (Z026.20068)
2 2 x 51-55mm Band Clamp (Z016.10002)	9 Connecting Pipe CP267
3 M8 x 25mm Washer (Z017.10825)	10 M12 x 1.25 x 10mm Blanking Plug (Z017.12719)
4 10mm Aluminium Spacer (Z026.10004)	11 Bump Stop Kit
5 M8 Nyloc Nut (Z017.10062)	
6 M8 x 60mm Cap Head Bolt (Z017.10080)	
7 Composite Strap (Z038.10088)	

E-MARK ROUND	N/A
E-MARK OVAL	BSAU 193a 1990/t3
ISSUE NO.	07
DATE	15/10/2018
AUTHORISED	J.Harkin
CHECKED	

NOTE: ENSURE SCORPION SYSTEM IS CLEAR OF MOVING PARTS AND ALL ORIGINAL FUNCTIONS WORK CORRECTLY.

A) Remove original exhaust from bike, taking care to keep all original components in a safe place.

B) Refit Scorpion exhaust as per line diagram above.

C) When fitted take bike for a short ride to ensure all functions are correct.

D) When bike & exhaust are cool enough check all nuts and bolts are still secure.