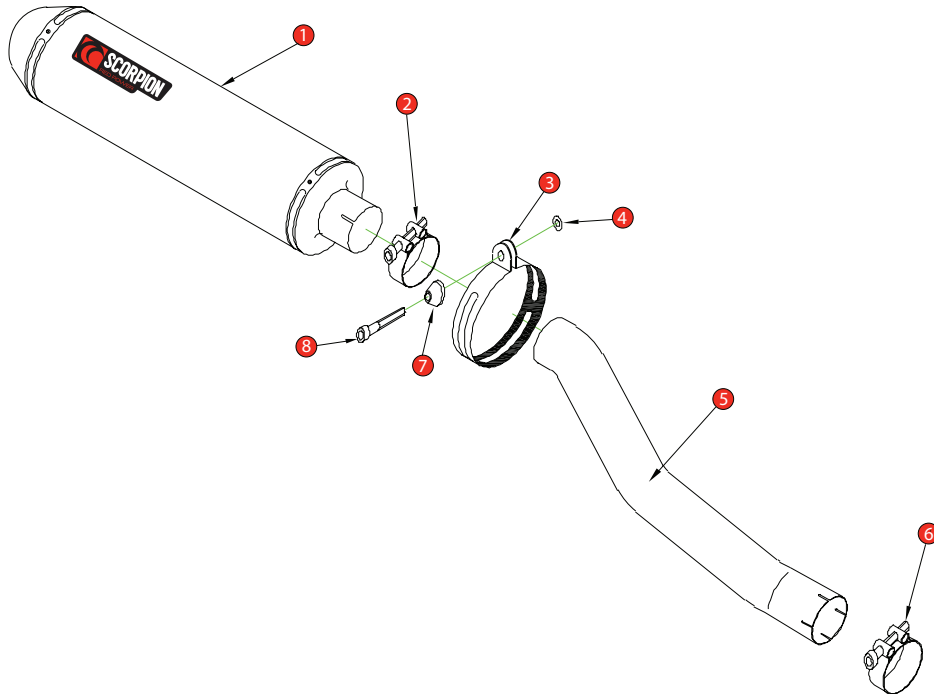


Box: PLOCK 1

BIKE	YAMAHA YZF 600 R6	PART NO.	EYA - 68
YEAR	2003 - 2005	FIT KITS	OVAL Z039.11121 // ROUND Z039.10121
NOTES	Use standard fittings where not supplied Remove standard gasket if fitted.	DB-Killer	SCEXDBK12 - (Type B)



- | | |
|---|--|
| 1 450mm Silencer ESC 50 | 8 M8 x 45mm Cap Head Bolt (Z017.10077) |
| 2 51-55mm Band Clamp (Z016.10002) | |
| 3 Composite Silencer Strap (R-Z038.10090)(O-Z038.10088) | |
| 4 M8 x 25mm Washer (Z017.10825) | |
| 5 Connecting Pipe CP 132 | |
| 6 55-59mm Band Clamp (Z016.10004) | |
| 7 Alloy Bolt Finisher (Z026.20068) | |

E-MARK ROUND	SCDB-RS E4 2035
E-MARK OVAL	SCDB-OS E4 2072
ISSUE NO.	09
DATE	23/10/2018
AUTHORISED	J.Harkin
CHECKED	

NOTE: ENSURE SCORPION SYSTEM IS CLEAR OF MOVING PARTS AND ALL ORIGINAL FUNCTIONS WORK CORRECTLY.



A) Remove original exhaust from bike, taking care to keep all original components in a safe place.

B) Refit Scorpion exhaust as per line diagram above.

C) When fitted take bike for a short ride to ensure all functions are correct.

D) When bike & exhaust are cool enough check all nuts and bolts are still secure.